

Research in Baden-Württemberg

A PARADISE FOR SCIENTIFIC ENDEAVOURS.



Baden-Württemberg

The German Southwest.

Over 100 Centres of Expertise

Research in Baden-Württemberg





Index

University Research

4–8 **RESEARCH UNIVERSITIES** | Universität Freiburg | Universität Heidelberg | Universität Hohenheim | Karlsruher Institut für Technologie | Universität Konstanz | Universität Mannheim | Universität Stuttgart | Universität Tübingen | Universität Ulm

9–10 **THE EXCELLENCE INITIATIVE**

11 **UNIVERSITY HOSPITALS** | **UNIVERSITIES OF EDUCATION** | **UNIVERSITIES OF ARTS AND MUSIC**

11–13 **UNIVERSITIES OF APPLIED SCIENCES** | Hochschule Aalen | Hochschule Albstadt-Sigmaringen | Hochschule Biberach | Hochschule Esslingen | Hochschule Furtwangen | Hochschule Heilbronn | Hochschule Karlsruhe | Hochschule Kehl | Hochschule Konstanz | Hochschule Ludwigsburg | Hochschule Mannheim | Hochschule für Wirtschaft und Umwelt Nürtingen-Geislingen | Hochschule Offenburg | Hochschule Pforzheim | Hochschule Ravensburg-Weingarten | Hochschule Reutlingen | Hochschule für Forstwirtschaft Rottenburg | Hochschule für Gestaltung Schwäbisch Gmünd | Hochschule der Medien Stuttgart | Hochschule für Technik Stuttgart | Hochschule Ulm | Centres for Applied Research

Non-University Research

14–20 **MAX-PLANCK-GESELLSCHAFT** | Institutes | International Max Planck Research Schools | **HELMHOLTZ-GEMEINSCHAFT** | Karlsruhe Institute of Technology | German Aerospace Center | German Cancer Research Center | **LEIBNIZ-GEMEINSCHAFT** | Institutes | **FRAUNHOFER-GESELLSCHAFT** | Institutes | **CONTRACT RESEARCH INSTITUTES** | Institutes | **HEIDELBERG ACADEMY OF SCIENCES AND HUMANITIES** | **INTERNATIONAL RESEARCH INSTITUTIONS** | European Molecular Biology Laboratory | Institute for Transuranium Elements

From Idea to Product

21 **RESEARCH AND DEVELOPMENT SPAWNS DYNAMISM** | **NETWORK-BASED SYNERGIES** | **TECHNOLOGY TRANSFER AND START-UPS**

Excellent Research Climate

22–23 **INTENSIVE INFRASTRUCTURE AND PROJECT FUNDING** | **EXPERT PARTNERS**

University Research

RESEARCH UNIVERSITIES

Of Baden-Württemberg's 80 higher education institutions, the nine research universities form the most important pillars of academic research. They include Germany's first university, founded in Heidelberg in 1386, and those of Freiburg and Tübingen, founded in the 15th century. The great technical and social changes of the 19th century triggered the founding of universities in Hohenheim, Stuttgart, Karlsruhe and Mannheim, originally dedicated purely to the fields of agriculture, engineering or economics. The universities of Ulm and Konstanz were founded in the 20th century. From the outset, Ulm University was planned as a natural and medical sciences university, while at the University of Konstanz the principle of interdisciplinarity is already laid down in its founding charter. In the winter semester 2008/2009, the total number of students enrolled in Baden-Württemberg's research universities was over 136,000, around 17 per cent of whom come from abroad.

The research universities cover the entire range from traditional basic research to industrial application of research results. Their growing importance is reflected in the steady increase in third-party funding and excellent laboratory facilities. While in 1995 the universities were able to raise roughly € 300 million in additional funds, in 2008 they collected € 533 million. This represents 91 per cent of all third-party funds for all types of higher education institutions.

Baden-Württemberg's universities engage in research in nearly all fields – in the classic subjects of humanities and social and natural sciences as well as in high-technology and cutting-edge fields like life sciences, aerospace engineering, nanotechnology, catalysis and power engineering. Naturally, international exchanges and interdisciplinary cooperation and collaboration with other institutions are part and parcel of these activities. The research universities regularly occupy the high spots in university and research rankings. Within the framework of the Excellence Initiative of the German Federal and States' Governments, these universities have shown they are ready for the future. Out of Germany's nine top universities selected by the Excellence Initiative, four are located in Baden-Württemberg. The initiative also awards funds to numerous Graduate Schools and Clusters of Excellence.

Universität Freiburg

Established 1457, students: 19,682



The University of Freiburg enjoys a worldwide reputation mainly for its excellence in the humanities. Less well-known is its technical faculty, which has been in existence for fifteen years, combining traditional disciplines like mathematics, physics and chemistry with the entire spectrum of microsystems technology.

Research is organised in multi-departmental research centres. Examples are the Centre for Biological Signalling Studies (bioss), bringing together scientists from the fields of biology, biochemistry, medicine and microsystems technology, or the Freiburg Materials Research Center, where materials research combines input from the faculties of mathematics, physics, engineering, medicine, biology and chemistry, as well as from the fields of earth and pharmaceutical sciences. Further research centres exist in neuroscience, law, history, economics and many other fields. There is close cooperation with non-university research institutions like the Fraunhofer Institutes, the Max Planck Institute of Immunobiology and the Kiepenheuer Institute for Solar Physics, as well as with industrial partners.

The Freiburg Institute for Advanced Studies (FRIAS) is an international research school for history, philology, life sciences and material sciences. It aims at systematically strengthening top university research, developing new fields of research and promoting young researchers.

www.uni-freiburg.de

Universität Heidelberg

Established 1386, students: 24,918

UNIVERSITÄT
HEIDELBERG

The Future. Since 1386.

From Astronomy to Zoology – Universität Heidelberg is an active research university of international acclaim. Founded in 1386, it is Germany's oldest university.

With its broad range of faculties and departments, interdisciplinary cooperation in research networks has a long tradition at this classic comprehensive university. At the South Asia Institute, for instance, founded in the 1960s, scientists from cultural, social and economic studies combine their research efforts. In the 1980s, the Centre of



Molecular Biology (biology/chemistry) and the Interdisciplinary Centre for Scientific Computing followed and were joined later by the Interdisciplinary Centre for Neurosciences and the BioQuant research network.

Within the framework of the Excellence Cluster Competition by the Federal Ministry of Education and Research, strategic partnerships were forged with university and non-university research institutes as well as research-focused enterprises in the metropolitan Rhine-Neckar region. At the “Forum Organic Electronics”, and “Cell-Based and Molecular Medicine” clusters, researchers from Universität Heidelberg work together with their partners on cutting-edge technologies in organic electronics and molecular cell biology. The most important non-university partners located in Heidelberg are the German Cancer Research Center (DKFZ) and the European Laboratory for Molecular Biology. CaRLa, a laboratory for catalysis research, was built jointly with BASF, and the Imaging Center with Nikon and other partners.

www.uni-heidelberg.de

Universität Hohenheim

UNIVERSITÄT HOHENHEIM



Established 1818, students: 6,676

The roots of the University of Hohenheim stretch back to the year 1818, when it was founded as an agricultural school. Faculties of natural sciences, economics and social sciences were later added to the original focus. The main research areas of the university are agriculture and nutrition sciences in the framework of the food chain, energy and raw materials supply from agriculture, biosignals and their mechanisms in signal processing as well as innovation and services.

Along with Collaborative Research Centres and other research centres at the faculties, scientific centres also play an important role. They facilitate interdisciplinary research and strengthen international cooperation on research projects. Noted scientific centres of the university are the Life Science Centre, the Eastern European Centre, the Centre for Agriculture in the Tropics and Subtropics, as well as the Competence Centre for Gender and Nutrition – one of

its kind in Germany – and the Centre for Research on Innovation and Services.

The university is a member of international university networks such as the Euroleague of Life Sciences. It has been certified as a “family-friendly university”.

www.uni-hohenheim.de

Karlsruher Institut für Technologie

University of the State of Baden-Württemberg and

National Research Center of the Helmholtz Association

Established 2009, students: about 19,000

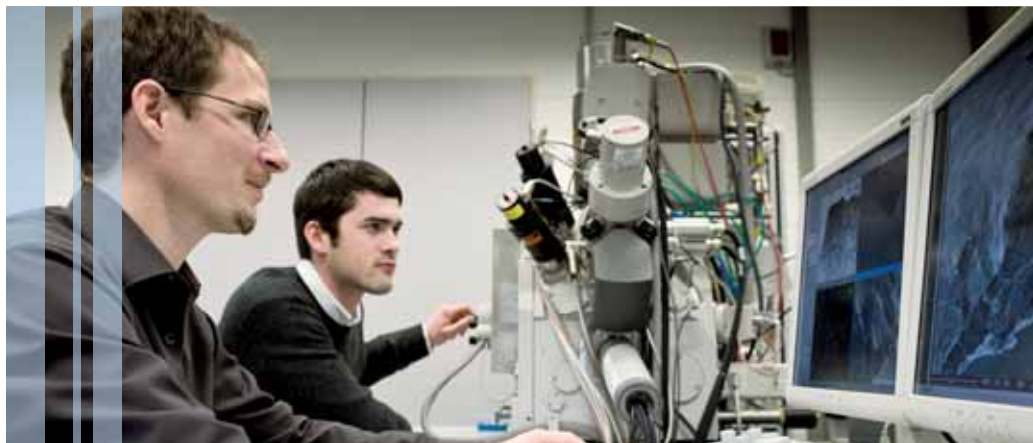


The Karlsruhe Institute of Technology (KIT) was founded by a merger of the Forschungszentrum Karlsruhe and Universität Karlsruhe. The result is a unique institution in Germany, where the partition between university and non-university research is abolished. KIT has a staff of over 8,000 (300 of them professors), 19,000 students and an annual budget of € 650 million.

In October 2006, Universität Karlsruhe prevailed in the first selection round of the Federal Excellence Initiative and became one of then only three universities to receive the prestigious elite status. The foundation of KIT in cooperation with the Forschungszentrum Karlsruhe played an important role in this success.

Research at KIT is grouped into six areas of competence: Matter and Materials; Earth and Environment; Information, Communication and Organisation; Applied Life Sciences; Technology, Culture and Society; and finally Systems and Processes. Each of them combines related research areas of different faculties and departments and thus also offers a platform for the exchange across the boundaries of academic disciplines. Research is organised into KIT Centers and KIT Focuses: Energy, Climate and Environment, NanoMikro, Elementary Particle and Astroparticle Physics, COMMputation, Mobility Systems, Optics and Photonics, Human & Technology, and New and Applied Materials.

KIT cooperates with numerous international partners. For instance, it measures cosmic radiation in cooperation with the Auger Observatory in Argentina, and it works on determining the neutrino mass



within the framework of the Karlsruhe Tritium Neutrino Experiment KATRIN. KIT has provided several technologies to the fusion experiment ITER in Cadarache, France.

www.kit.edu

Universität Konstanz

Established 1966, students: 8,820

Universität
Konstanz



At the University of Konstanz, interdisciplinary cooperation in research and teaching has been practised since its foundation. For this purpose, departments were connected under the roof of interdisciplinary faculties. Another important principle is teaching from research, meaning that current research results are to be reflected in seminars and lectures and the students are actively involved in research projects.

Research projects involve the humanities as well as the natural and social sciences. Research activities are often combined into research centres and initiatives, like the Center for Applied Photonics, the Genomics and Proteomics Resource Center (GenProC), the Research Center Social Capital or the Nanostructure Laboratory.

The promotion of young scientists is another focal point at the University of Konstanz, with the Zukunftskolleg playing an important role here. Outstanding national and international young researchers are provided with post-doctorate fellowships, enabling them to work freely and independently on a specific research project for up to five years, giving them a head start in their academic career. Because their work is at the same time embedded in the departments of their fields, the research still remains closely connected to the university's research infrastructure.

www.uni-konstanz.de

Universität Mannheim

Established 1907, students: 9,840

UNIVERSITY OF
MANNHEIM

With its core academic activities in the fields of economics, business administration and social sciences, the University of Mannheim ranks

among the best research centres in Germany. These three disciplines cooperate closely with the faculties of humanities, mathematics and computer science and offer a wide range of research projects unique in Germany. Central research subjects are decisions, governance, migration and integration as well as language acquisition.

The university's largest research institute is the Mannheim Center for European Social Research. It is dedicated to the research of societal, social and political developments in Europe. One special focus is the comparative study of developments in different European countries and the European integration process. The Mannheim Research Institute for the Economics of Aging (MEA) studies the different aspects and results of an increasingly aging society.

The Graduate School of Economics and Social Sciences (GESS) receives special funding from the Excellence Initiative. Up to 110 young scientists are taught in the methods of modern economics and social sciences.

www.uni-mannheim.de

Universität Stuttgart

Established 1829, students: 18,491



University of Stuttgart
Germany

The University of Stuttgart is mainly known for its research activities in natural and engineering sciences. Part of its special profile is a close networking of these faculties with humanities and social sciences. Research is organised around a number of interdisciplinary areas – modelling and simulation techniques, new materials, complex systems and communication, technology concepts and technology evaluation, energy and environment, mobility, integrated product and production design, as well as design and technology of sustainable environments. The vision behind it all is to study the complete product development and life cycle. This also involves questions of technological engineering and realisation, and the sustainability of technical innovation.

Research infrastructures like the wind tunnel or the High Performance Computing Centre are among the most modern and efficient worldwide and are also used by external partners. The wind tunnel, for instance, is of interest for automobile companies like Daimler



and Porsche, because it can perform realistic simulations of aerodynamics and aeroacoustics of vehicles at speeds over 260 km/h. At the High Performance Computing Centre, whole production plants can be simulated.

Cooperation with the German Aerospace Center, several Fraunhofer and Max Planck Institutes as well as other research institutions make the University of Stuttgart a motor for innovation in the region.

www.uni-stuttgart.de

Universität Tübingen

Established 1477, students: 21,461



The University of Tübingen stands for a 500-year tradition of research in humanities and natural and life sciences. Many of today's research projects follow an interdisciplinary design. Infectiology research in Tübingen is a successful joint effort between researchers from medicine, biology, biochemistry, pharmaceutical studies and bio-computing. The Kepler Center for Astro and Particle Physics brings together the fields of experimental and theoretical physics with astronomy and astrophysics. The Kepler Center investigates the origin and structure of the universe and the properties of elementary particles under extreme conditions. At the Tübingen Centre for

Linguistics, linguists and philologists cooperate with scientists from the fields of psychology, neuroscience and computer science. They study structural questions of language and meaning as well as the processes of acquiring, processing and interpreting language.

Additional focal points are the molecular biology of plants, neuroscience, earth science and environmental research, pharmaceutical research, archaeology as well as Asian/Oriental studies.

A graduate academy is being established to promote young scientists and offer structured doctoral studies in the fields of medicine and life sciences, natural sciences, humanities and cultural sciences, law, economics, and social and behavioural sciences.

www.uni-tuebingen.de

Universität Ulm

Established 1967, students: 6,998



Originally founded as a university with a focus on medicine and natural sciences, the range of disciplines has recently been enlarged to include economics as well as computer science and engineering. Research is centred around information and communication technologies, financial services and their mathematical methods, life sciences and medicine, nano- and biomaterials, and quantum engineering.





Research is undertaken in all disciplines, often across the classic boundaries of disciplines and faculties. At the Institute of Orthopedic Research and Biomechanics, for instance, physicists, natural scientists and engineers work together on questions of biotechnology and medical technology. The Collaborative Research Centre “Signals and Signal Processing during Cellular Differentiation” brings together researchers from the fields of medicine and various natural sciences. Further focal points of interdisciplinary research are energy transformation and storage, functional high resolution imaging, simulation and prototyping as well as regenerative medicine.

Ulm University cooperates with numerous partners in application-oriented research, such as enterprises, the Ulm University of Applied Sciences, the different research institutes associated with the university, and the university hospital.

www.uni-ulm.de

Collaborative Research Centres funded by the German Research Foundation (DFG)


Collaborative Research Centres facilitate complex research projects and help universities develop their own profiles.

COLLABORATIVE RESEARCH CENTRES	Universität Freiburg	Universität Heidelberg	Universität Hohenheim	Karlsruher Institut für Technologie	Universität Konstanz	Universität Mannheim	Universität Stuttgart	Universität Tübingen	Universität Ulm
Humanities and Social Sciences		1				1	1	1	
Life Sciences	6	6	1					3	2
Natural Sciences	1	2		1	3		3		2
Engineering				5			2		

Source: DFG, February 2010



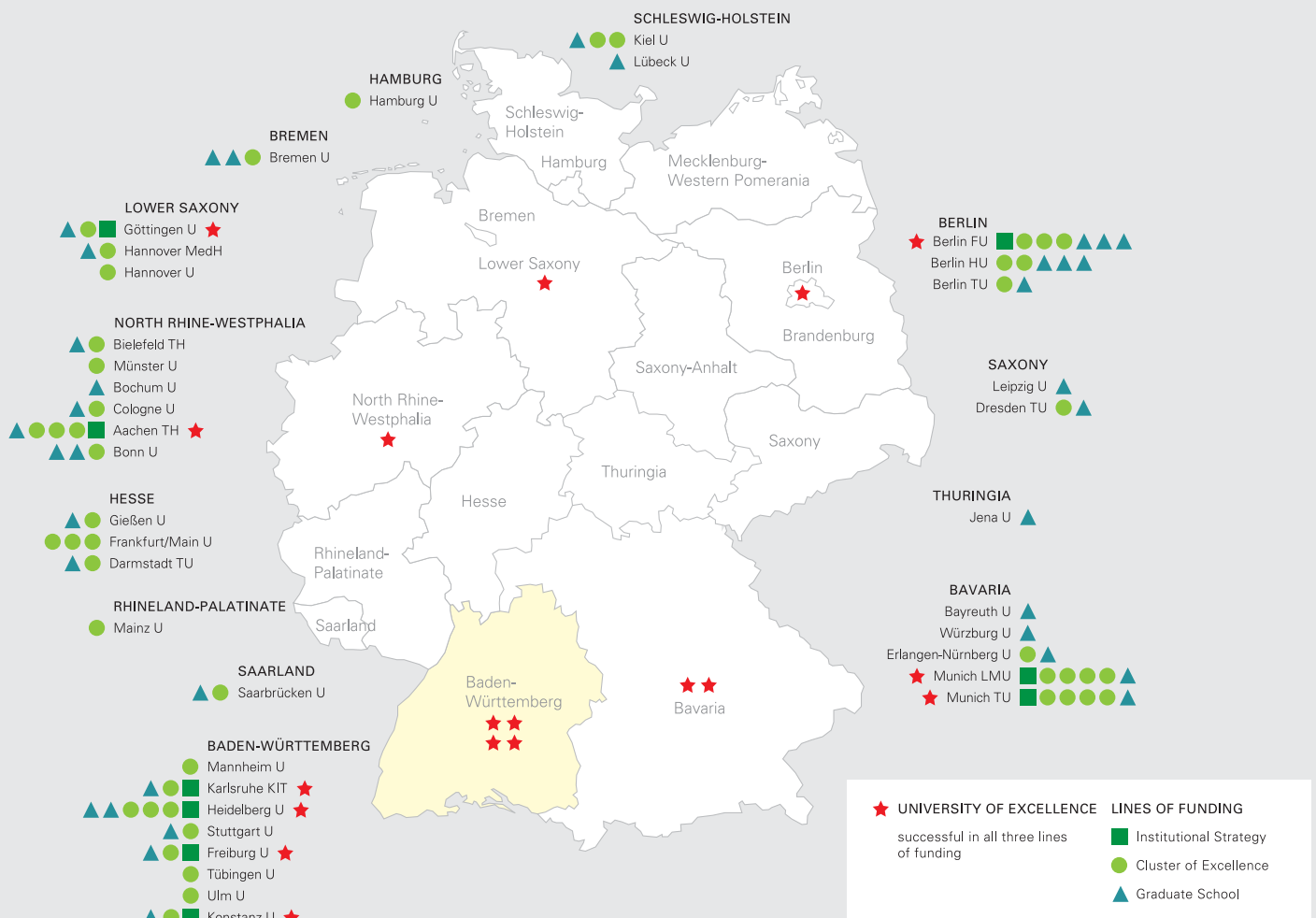
The Excellence Initiative

 The Excellence Initiative by the German Federal Government and the States' Governments is a competition set in two rounds aimed at strengthening cutting-edge university research and institutional strategies. The programme will provide € 1.9 billion between 2006 and 2012. There are three lines of funding:

- **Graduate Schools** for the structured training of doctoral candidates. These are funded with up to €2.5 million per year.
- **Clusters of Excellence** to form outstanding, internationally visible research centres. They receive up to €8 million in funding annually.
- **Institutional Strategies** developed by the universities to leverage their strengths and join the ranks of the world's leading research institutions.

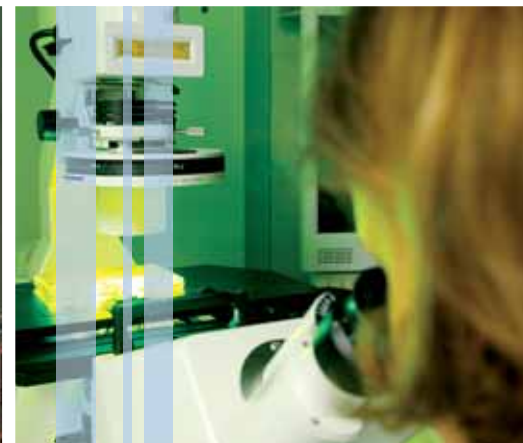
Only universities that were awarded funds in all three lines count among Germany's Universities of Excellence. Baden-Württemberg fared extraordinarily well in the Excellence Initiative. Four of Germany's nine top universities are located here. Already in the first round of funding in 2006, Universität Karlsruhe (TH) was able to pull through in all three lines. In 2008, the Universities of Heidelberg, Freiburg and Konstanz followed. The other universities in Baden-Württemberg were also successful in the funding lines: nine of the 39 Graduate Schools in Germany funded by the programme, and seven of a total of 37 Clusters of Excellence, are located in Baden-Württemberg.

Between 2012 and 2017, the Excellence Initiative is planned to be continued, with an intended funding budget of € 2.7 billion.





	INSTITUTIONAL STRATEGY	CLUSTER OF EXCELLENCE	GRADUATE SCHOOL
Universität Freiburg	Windows for Research www.exzellenz-uni-freiburg.de	Centre for Biological Signalling Studies (bioss) www.bioss.uni-freiburg.de	Spemann Graduate School of Biology and Medicine www.sgbm.uni-freiburg.de
Universität Heidelberg	Realising the Potential of a Comprehensive University www.uni-heidelberg.de/excellence/concept	Cellular Networks www.cellnetworks.uni-hd.de	Graduate School of Fundamental Physics www.fundamental-physics.uni-hd.de
		Asia and Europe in a Global Context: Shifting Asymmetries in Cultural Flows www.vjc.uni-hd.de	Graduate School of Mathematical and Computational Methods for the Sciences www.mathcomp.uni-heidelberg.de Hartmut Hoffman-Berling International Graduate School of Molecular and Cellular Biology www.hbig.uni-heidelberg.de
Karlsruher Institut für Technologie (KIT)	The Karlsruhe Institute of Technology www.kit.edu	Center for Functional Nanostructures (CFN) www.cfn.uni-karlsruhe.de	Karlsruhe School of Optics and Photonics www.ksop.de
Universität Konstanz	Towards a Culture of Creativity www.uni-konstanz.de/exzellenz	Cultural Foundations of Integration www.exc16.de	Konstanz Research School Chemical Biology www.chembiol.uni-konstanz.de
Universität Mannheim			Graduate School of Economic and Social Sciences (GESS) www.gess.uni-mannheim.de
Universität Stuttgart		Simulation Technology (SimTech) www.simtech.uni-stuttgart.de	Graduate School for advanced Manufacturing Engineering (GSaME) www.gsame.de
Universität Tübingen		Werner Reichardt Center for Integrative Neuroscience (CIN) www.cin.uni-tuebingen.de	
Universität Ulm			International Graduate School in Molecular Medicine www.uni-ulm.de/mm



UNIVERSITY HOSPITALS

The university hospitals are high-profile centres of clinical research and connected closely to the medical faculties of their respective universities. Their activities range from basic research to disease- and patient-orientated studies.

At the university hospital in Tübingen, the first experimental operating unit in Europe was developed – an open platform for research and development in medical engineering. The aim is to optimise work processes within operating teams and improve the interaction between man and technology during surgery.

www.uniklinik-mannheim.de
www.uniklinik-heidelberg.de
www.medizin.uni-tuebingen.de

www.uniklinik-freiburg.de
www.uniklinik-ulm.de

UNIVERSITIES OF EDUCATION

Baden-Württemberg's universities of education stand out for their varied interdisciplinary and inter-university research in the fields of education and school research, teaching methodology, and teaching and learning research. All universities undertake nationally- and internationally-noted third-party funding projects.

While each university has its own programme to promote young researchers, there are several interdisciplinary, inter-university graduate schools and a joint graduate academy, bringing together the efforts of all universities of education. The PhD theses cover a broad range of teaching subjects and education science.

The universities of education possess complete authority to confer doctoral and habilitation degrees and are thus scientific institutions of equal rank to the research universities.

www.ph-bw.de
www.ph-freiburg.de
www.ph-ludwigsburg.de
www.ph-heidelberg.de

www.ph-gmuend.de
www.ph-karlsruhe.de
www.ph-weingarten.de

UNIVERSITIES OF ARTS AND MUSIC

The research activities and artistic development projects of the universities of arts and music have a wide variety – they range from art history to art restoration, from interpretation and composition to musicology and music education studies. The international focus of these universities is reflected by a high proportion – up to 40 per cent – of students from abroad, especially in the music sector. The Film Academy and Pop Academy complete the range. The Academy for Performing Arts, founded in 2008, offers a unique study programme at the interface between stage and film.

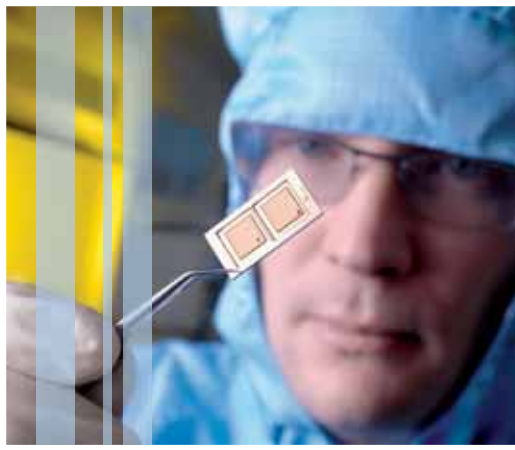
www.abk-stuttgart.de
www.hfg-karlsruhe.de
www.hfm-karlsruhe.de
www.kunstakademie-karlsruhe.de
www.muho-mannheim.de
www.mh-stuttgart.de

www.mh-freiburg.de
www.mh-trossingen.de
www.pop-akademie.de
www.filmakademie.de
www.adk-bw.de

UNIVERSITIES OF APPLIED SCIENCES

Universities of applied sciences consider their research activities a bridge between basic research and technology transfer. They build on the results of basic research, but their research is geared towards application. It is their aim to apply research results to concrete products, processes and services and thus bring them to commercial use. The enterprises of the region are important partners and at the same time the main target group of the universities of applied sciences: the universities work with them in numerous research projects, often sharing their expertise and technical infrastructure for research projects.

Research projects are organised mainly at the Institutes of Applied Sciences (IAF). With their interdisciplinary focus they see themselves as service institutions for all university staff interested in research and they are the first contact for SMEs, public institutions and other universities.



The universities of applied sciences cover the following research areas:

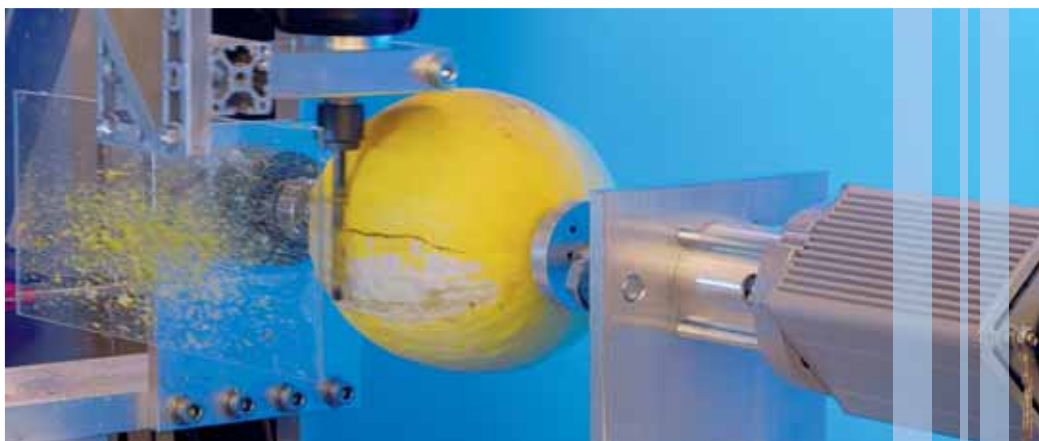
- Nano- and microsystems
- Industrial engineering
- Automation technology
- Microsystems engineering
- Optics and photonics
- Autonomous robotics and intelligent systems
- Biotechnology and medical technology
- Environmental technology
- Energy-efficient construction
- Landscape and environmental planning
- Sustainable agriculture and forestry
- Climate impact research

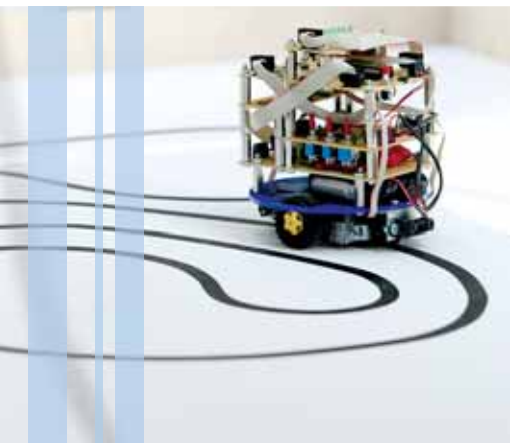
Centres for Applied Research (ZAFH)

After the foundation of the first centres for applied research (ZAFH) in 2002, innovative research areas are being systematically developed at the universities of applied sciences. With this programme, the State of Baden-Württemberg intends to foster the development of research profiles and priorities among universities of applied sciences in order to drive and support innovation in their regions. The centres consolidate the competencies of the universities of applied sciences in fields with high innovation potential, especially for SMEs of various industries. Possible cooperation partners are other universities of applied sciences, research universities and state and non-profit research institutions. Private enterprises are not eligible to receive funding. In 2002, three centres for applied research were successfully established at the Universities of Applied Sciences in Furtwangen,

Stuttgart (HfT) and Mannheim (ZEMIS, net and Biotech). As of 2008, the State of Baden-Württemberg has been building another four such research centres within the framework of the “Future Campaign IV – Innovation and Excellence”, in cooperation with the European Regional Development Fund (ERDF):

- At the **Center of Computational Materials Science and Engineering (CCMSE)**, the Universities of Applied Sciences of Pforzheim and Aalen, two research universities, one Fraunhofer Institute and the German Cancer Research Center work together under the aegis of Karlsruhe University of Applied Sciences. The Center conducts computer-simulated studies on how materials behave in different alloys, in different production techniques or manufacturing processes. The processes can be made visible in ways that were previously impossible, showing, for instance, the manufacture of foundry products. In the future, such images could render unnecessary costly test series like crash tests in automobile engineering, which are needed today to test the properties of materials.
- Autonomous mobile service robots are already in use today, for instance in production processes. In the future, such robots will render services in all areas of life. One of the big challenges in the development of such service machines is their adaptability to changing environments. Until now, there has been no universal methodology for the construction of mobile robots. This is precisely what the ZAFH project **Autonomous Mobile Service Robots**, operated jointly by the Universities of Applied Sciences of Ravensburg-Weingarten and Mannheim, tries to achieve. The main focal point is the consolidation and further development of





existing engineering methods, while keeping them simple and fit for everyday use.

- Methods in digital signal processing play an increasingly important role in many industries, for instance in the development of driver assistance systems in automobiles. Under the aegis of the Pforzheim University of Applied Sciences, four additional universities of applied sciences (Albstadt-Sigmaringen, Heilbronn, Karlsruhe, and Mannheim) as well as two research universities, cooperate in the ZAFH project **Model Based Design and Realization Patterns of Signal Processing Embedded Systems (MERSES)**. Their goal is to develop a fundamental methodology for the design and realisation of embedded signal processing systems emulating modelling methods that are common in software development today.

- The **ZAFH-PHOTONⁿ** project studies photonic methods in new dimensions. The project brings together researchers from Aalen University and five other universities of applied sciences (Furtwangen, Konstanz, Mannheim, Offenburg und Reutlingen) as well as two institutes from research universities in order to develop photonic measuring methods for special biological study situations and to build the necessary microtechnology for a prototype to use in measuring and analytical technology. These devices can be later used in medical and environmental diagnosis.

The ZAFH centres established in the years 2002 to 2007 continue to exist as research collaborations. **zafh.net** investigates sustainable-energy technologies and is coordinated by Stuttgart University of Applied Sciences. The **Center for Microtechnology and Systems**

Integration (ZEMIS) at the Furtwangen University of Applied Sciences offers SMEs services in the development of miniature devices and with the use of microtechnology. The **Center for Applied Biotechnological Research (ZAFH-Biotech)** at Mannheim University of Applied Sciences has been dealing with questions of genetically-based pharmaceutical research and molecular diagnostics. The State has called for tenders for the establishment of up to three more centres for applied research with additional funding from the European Regional Development Fund (ERDF).

www.htw-aalen.de

www.hs-albsig.de

www.fh-biberach.de

www.hs-esslingen.de

www.hs-furtwangen.de

www.hfg-gmuend.de

www.hs-heilbronn.de

www.hs-karlsruhe.de

www.hs-kehl.de

www.htwg-konstanz.de

www.hs-ludwigsburg.de

www.hs-mannheim.de

www.hfwu.de

www.hs-offenburg.de

www.hs-pforzheim.de

www.reutlingen-university.de

www.hs-rottenburg.de

www.hdm-stuttgart.de

www.hft-stuttgart.de

www.hs-ulm.de

www.hs-weingarten.de



Non-University Research

✎ Few other regions in Europe are home to as many research institutions as Baden-Württemberg. International and national large-scale research centres like the European Molecular Biology Laboratory, the Karlsruhe Institute of Technology and the German Cancer Research Center in Heidelberg are just as much at home here as the Center for Art and Media Karlsruhe and various institutes of prestigious research societies. For instance, Baden-Württemberg boasts twelve institutions of the Max Planck Society, three research centres of the Helmholtz Association and 13 Fraunhofer Institutes.



MAX-PLANCK-GESELLSCHAFT

The Max Planck Society for the Advancement of Science is an independent, non-profit research organisation. Its scientists engage in first-class research in life and natural sciences and in the humanities at the frontiers of knowledge and look for answers to fundamental questions. Their discoveries lay the foundations for innovations of economic and social importance. No other German research organisation has produced more Nobel Prize winners, among them Albert Einstein, who was born in Ulm, Christiane Nüsslein-Volhard, the development biologist from Tübingen, Bert Sakmann from the Max Planck Institute for Medical Research in Heidelberg, and Klaus von Klitzing from the Max Planck Institute for Solid State Research in Stuttgart.

The research activities at the Max Planck Institutes complement the work done at the universities and other research institutions. Their scientists often take up new, innovative research subjects that either require significant financial and/or labour expenditure, or that do not fit into the classic university structures due to their interdisciplinary character.

Currently, there are 2,800 Max Planck staff members working in Baden-Württemberg, among them numerous international researchers. Through research projects with foreign partners, the Max Planck Institutes are part of an international network. The Large Binocular Telescope (LBT) on Mount Graham, USA – the largest and most modern telescope in the world – was built with a huge contribution from the Max Planck Institute for Astronomy in Heidelberg. The Max Planck Institute for Comparative Public Law

and International Law serves as an advisor to constitutional institutions in Afghanistan and Sudan.

www.mpg.de

Max Planck Institutes and Research Groups in Baden-Württemberg

MPI for Astronomy, Heidelberg
www.mpia.de

MPI for Biological Cybernetics, Tübingen
www.kyb.mpg.de

MPI for Comparative Public Law and International Law, Heidelberg
www.mpil.de

MPI for Developmental Biology, Tübingen
www.eb.tuebingen.mpg.de

MPI for Foreign and International Criminal Law, Freiburg
www.mpicc.de

MPI of Immunobiology, Freiburg
www.immunbio.mpg.de

MPI for Medical Research, Heidelberg
www.mpimf-heidelberg.mpg.de

MPI for Metals Research, Stuttgart
www.mf.mpg.de

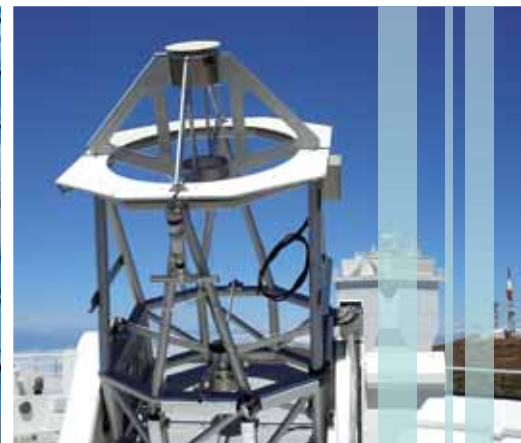
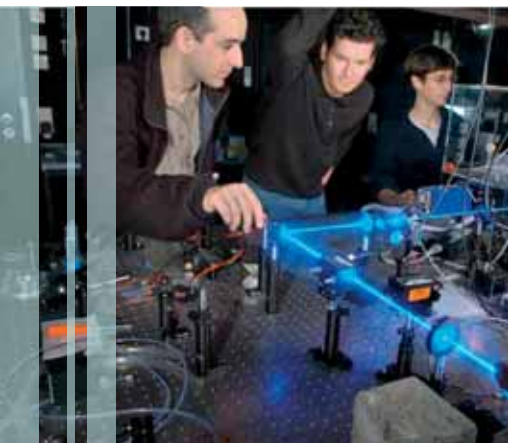
MPI for Nuclear Physics Heidelberg
www.mpi-hd.mpg.de

MPI for Ornithology, Seewiesen/Ornithological Station Radolfzell
www.orn.mpg.de

MPI for Solid State Research, Stuttgart
www.fkf.mpg.de

MP Research Group on Stem Cell Aging, Ulm (at Ulm University)
www.uni-ulm.de/en/einrichtungen/institute-of-molecular-medicine

The Friedrich Miescher Laboratory of the Max Planck Society, Tübingen
www.fml.tuebingen.mpg.de



International Max Planck Research Schools (IMPRS)

Promoting young scientists plays a key role in the science policy of the Max Planck Society. One important element in this policy is the network of International Max Planck Research Schools (IMPRS). The schools offer structured graduate study programmes in innovative and interdisciplinary research areas like molecular biology, neurosciences, demographics, plasma physics, polymer research and computer science. Participants enjoy excellent research opportunities. Around half of the gifted young scientists enrolled in IMPRS programmes come from abroad; they have the choice of doing their Ph.D. exam either at a German university or at their home university.

IMPRS in Baden-Württemberg

Astronomy and Cosmic Physics, Heidelberg
www.mpia.de/imprs-hd

Advanced Materials, Stuttgart
www.imprs-am.mpg.de

Comparative Criminal Law, Freiburg
www.mpicc.de

Graduate School of Neural & Behavioural Sciences, Tübingen
www.neuroschool-tuebingen-cogni.de

Molecular and Cellular Biology, Freiburg
www.imprs-mcb.mpg.de

Organismal Biology, Konstanz
www.orn.mpg.de

Precision Tests of Fundamental Symmetries, Heidelberg
www.mpi-hd.mpg.de/imprs-ptfs

Quantum Dynamics in Physics, Chemistry and Biology, Heidelberg
www.mpi-hd.mpg.de/imprs-qd

Retaliation, Mediation and Punishment, Freiburg
www.mpicc.de

Successful Dispute Resolution in International Law, Heidelberg
www.mpil.de

HELMHOLTZ-GEMEINSCHAFT



With its 16 national research centres, an annual budget of approximately €2.8 billion and a staff of nearly 28,000, the Helmholtz Association is Germany's largest scientific organisation. Helmholtz scientists engage in the following six fields: energy, earth and environment, health, key technologies, structure of matter, and aeronautics, space and transport.

With their cutting-edge research they strive to help secure and sustain the natural resources necessary for human life and to create the technological foundations for a competitive economy. By focusing their efforts and resources, the Helmholtz Association is not only able to offer solutions to individual questions, but also to pursue complex problems relevant to science, society and the economy in a holistic way.

One example of Helmholtz research: At the German Cancer Research Center in Heidelberg, the physicist Harald zur Hausen studied how cervical cancer is triggered by virus infections. This led to the successful development of a vaccine against the third most common cancer in women. In 2008, he received the Nobel Prize in Medicine.

www.helmholtz.de

Karlsruhe Institute of Technology



See full description above under University Research.

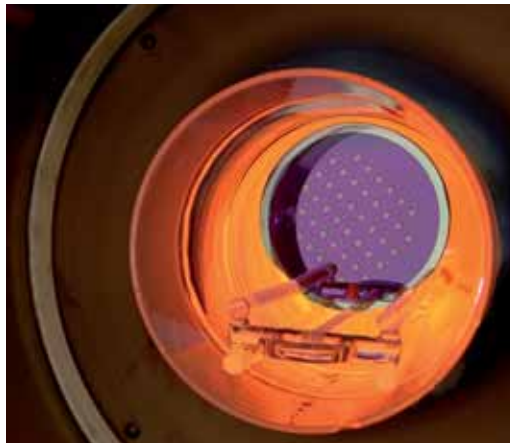
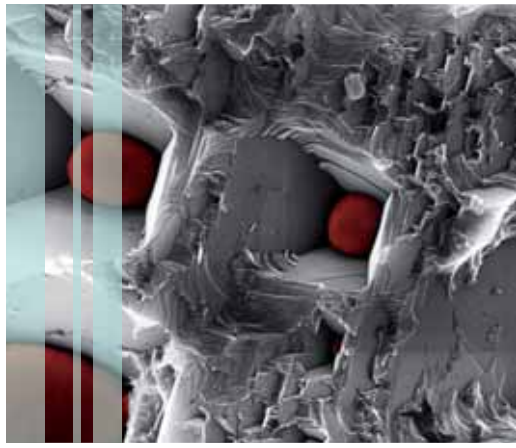
www.kit.edu

German Aerospace Center (DLR)



The German Aerospace Center (DLR) conducts comprehensive research and development activities in aerospace, energy and transportation. In Baden-Württemberg, DLR concentrates its activities in Stuttgart (staff: 500) and Lampoldshausen (staff: 220).

In Stuttgart, five institutes conduct research in the fields of structures and design, technical thermodynamics, combustion technology, technical physics and vehicle concepts. At the Lampoldshausen Institute, the main focus is on planning, building and operating test facilities for rocket engines commissioned by the European Space Agency (ESA) in cooperation with the European space industry.



The current research activities involve studies on the basics of combustion devices in liquid rocket engines and air-breathing propulsion in future space transport systems. In the development and operation of height simulation devices for the upper-stage drives of the Ariane 5 space launch system, the DLR has acquired unique expertise in Europe.

www.dlr.de/Stuttgart, www.dlr.de/Lampoldshausen

German Cancer Research Center



With an annual incidence of over 450,000 new cases and 270,000 deaths per year, cancer is one of the most feared diseases and the second most common cause of death in Germany. Few other diseases pose equally great challenges to researchers. Each organ can be affected, no type of cancer is like the other, and even tumours of the same organ can differ from patient to patient.

The German Cancer Research Center (DKFZ) is the largest biomedical research institute in Germany. Ninety per cent of its funding comes from the Federal Ministry of Education and Research, and the remaining ten per cent from the State of Baden-Württemberg. The Center's staff conduct research in over 60 departments and junior research groups on the origin and formation of cancer and risk factors for contracting the disease. On this basis, new concepts for the prevention, diagnosis and treatment of cancer are being developed. Scientists at the German Cancer Research Center have achieved decisive breakthroughs in their fields – in basic research as well as in the development of new means of diagnoses and treatments. As mentioned above, extraordinary recognition was bestowed upon the work of Harald zur Hausen when he was awarded the Nobel Prize in Medicine in 2008.

www.dkfz.de

LEIBNIZ-GEMEINSCHAFT



A sentence by the Association's great eponym, Gottfried Wilhelm Leibniz, can be taken as the mission statement of their research work: "Theoria cum praxi – science for the benefit and good of humankind". Consequently, its 86 member institutions investigate

questions of supraregional, general social relevance like globalisation, climate change, biodiversity, education research, and the demographic changes as well as widespread diseases. Currently there are 14,000 staff working for the Leibniz Association all over Germany; the total annual budget is € 1.2 billion.

The Leibniz Association is organised into five sections:

- Section A: Humanities and education research
- Section B: Economics, social and spatial sciences
- Section C: Life sciences
- Section D: Mathematics, natural sciences and engineering
- Section E: Environmental sciences

The institutes of the Leibniz Association are independent in their research and organisation. Due to the interdisciplinary research concept of many projects, they are closely networked with each other and with external partners like universities and other research institutions, but also with private enterprises.

Their research quests range from knowledge-driven basic research to applied research. The Association's institutes offer scientific infrastructures and offer research-oriented services to politicians, administration, enterprises and other research institutions, while striving to make their results impact society.

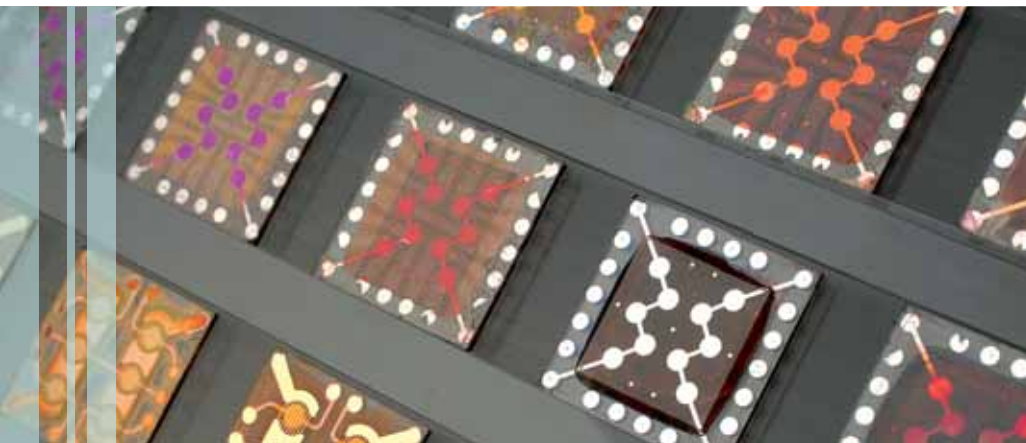
www.leibniz-gemeinschaft.de

Institutes of the Leibniz Association in Baden Württemberg

Leibniz Institute for Information Infrastructure (FIZ), Karlsruhe

FIZ Karlsruhe is a non-profit association for sci-tech information with the task of making scientific and technological information available to the public worldwide, and to provide such services to research and development institutions in industry, trade and administration. Together with Chemical Abstracts Service, USA, FIZ Karlsruhe operates the Scientific & Technical Information Network, an online service for sci-tech databases of all areas of science and technology.

www.fiz-karlsruhe.de



Leibniz Institute for the Social Sciences (GESIS), Mannheim

GESIS – Leibniz Institute for the Social Sciences – is the infrastructure organisation for social sciences, supporting scientific work by providing information, consultation and data. In the areas of empiric social research, archiving, documentation and data mining, and developing complex methods, GESIS offers a broad range of services both nationally and internationally. www.gesis.org

Institute for the German Language (IDS), Mannheim

The Institute for the German Language in Mannheim is the central non-university institute for the research and documentation of the German language. It is home to the German language archive, containing the largest collection of audio documents of the spoken German language. www.ids-mannheim.de

Knowledge Media Research Center (KMRC), Tübingen

The Knowledge Media Research Center (KMRC) is a non-university research institute with the non-profit foundation “Media in Education” at its organisational basis. The institute was founded in 2001 and is co-funded by the Federal Government and the State of Baden-Württemberg. The Center’s chartered aim is to carry out research in media-based learning and teaching to investigate the transfer of research results into the practice of teaching. In a multidisciplinary approach, scientists at the KMRC study the acquisition, exchange and communication of knowledge, using innovative technologies in multidisciplinary teams of researchers from cognitive and educational

sciences, human behavioural sciences and social sciences, complemented by a strong expertise in media technology.

www.iwm-kmrc.de

Kiepenheuer Institute for Solar Physics (KIS), Freiburg

Basic astrophysical research in the fields of theoretical and experimental solar physics forms the core research activity at the Kiepenheuer Institute for Solar Physics (KIS). The Institute also operates the German solar telescopes at the Observatorio del Teide, in Tenerife, Spain, and develops optical systems for the most demanding telescope technologies worldwide. www.kis.uni-freiburg.de

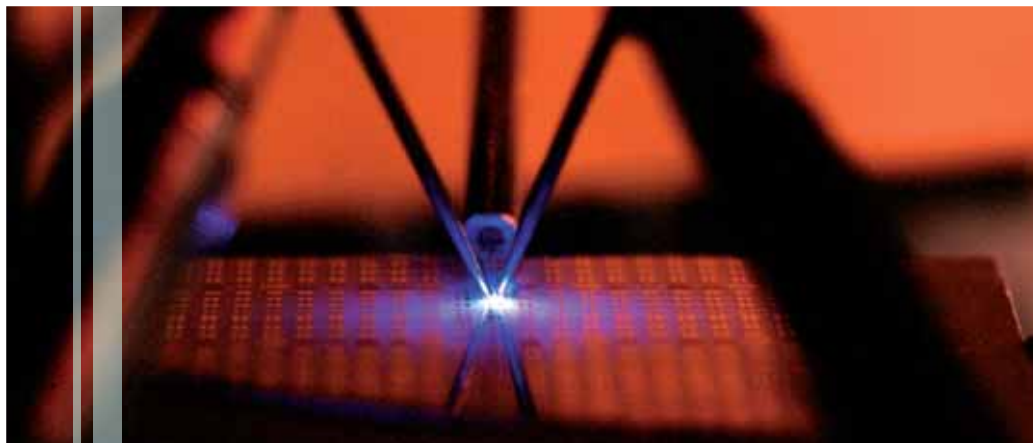
Institute for Mathematical Research (MFO), Oberwolfach

The Institute for Mathematical Research (MFO) in Oberwolfach organises research, scientific cooperation and training in mathematics and adjacent fields on an international scale. The promotion of young scientists plays an eminent role in the institute’s endeavours. MFO is one of the most prestigious institutions of its kind and holds a top position internationally. www.mfo.de

Centre for European Economic Research (ZEW), Mannheim

The Centre for European Economic Research in Mannheim is a leading German economic research institute, enjoying a strong reputation throughout Europe. The institute’s key objectives are to conduct research of the highest quality, to provide exceptional economic policy advising, to train young economists and to inform the professional and general public. www.zew.de





FRAUNHOFER-GESELLSCHAFT Fraunhofer

Research at the Fraunhofer-Gesellschaft is assignment- and results-orientated. Its scientists are active both in practically-oriented basic research as well as application-oriented research. Research activities are aimed at translating results into innovative products and services. In many cases, the Fraunhofer institutes are commissioned by customers from business, industry or the public sector. At the same time, however, they also pursue their own future-focused initial research, aimed at influencing the development of promising future technologies.

Research topics include energy, construction technology, medical engineering, environment and health, information and communication technology, production technology, micro-electronics and nanotechnology, traffic engineering and logistics, materials and components, and defence and security research. The Fraunhofer-Gesellschaft has also formulated a series of future-related topics that address challenges like climate change or the impending global scarcity of resources.

The Fraunhofer institutes are networked in institute groups, for example life sciences, production or micro-electronics, or in joint research projects. They also work closely with external partners, such as universities or other research institutions. For instance, the Institute of Industrial Manufacturing and Management (IFF) at the University of Stuttgart thus complements the industrially-focused research of the Fraunhofer Institute for Manufacturing Engineering and Automation IPA with basic research. In this way, a closed innovation loop, from idea to market-readiness, is created. From an institutional point of view, the two are linked by a common management. Some 13 Fraunhofer institutes are located in Baden-Württemberg.

www.fraunhofer.de

Fraunhofer Institutes and Centres in Baden-Württemberg

Fraunhofer Institute for Applied Solid State Physics IAF, Freiburg
www.iaf.fraunhofer.de

Fraunhofer Institute for Building Physics IBP, Stuttgart
www.ibp.fraunhofer.de

Fraunhofer Institute for Chemical Technology ICT, Pfinztal
www.ict.fraunhofer.de

Fraunhofer Institute for High-Speed Dynamics EMI, Freiburg
www.emi.fraunhofer.de

Fraunhofer Institute for Industrial Engineering IAO, Stuttgart
www.iao.fraunhofer.de

Fraunhofer Institute for Interfacial Engineering and Biotechnology IGB, Stuttgart
www.igb.fraunhofer.de

Fraunhofer Institute for Manufacturing Engineering and Automation IPA, Stuttgart
www.ipa.fraunhofer.de

Fraunhofer Institute for Mechanics of Materials IWM, Freiburg
www.iwm.fraunhofer.de

Fraunhofer Institute of Optronics, System Technologies and Image Exploitation IOSB, Karlsruhe
www.iosb.fraunhofer.de

Fraunhofer Institute for Physical Measurement Techniques IPM, Freiburg
www.ipm.fraunhofer.de

Fraunhofer Institute for Silicate Research ISC, Würzburg/Bronnbach Branch
www.isc.fraunhofer.de

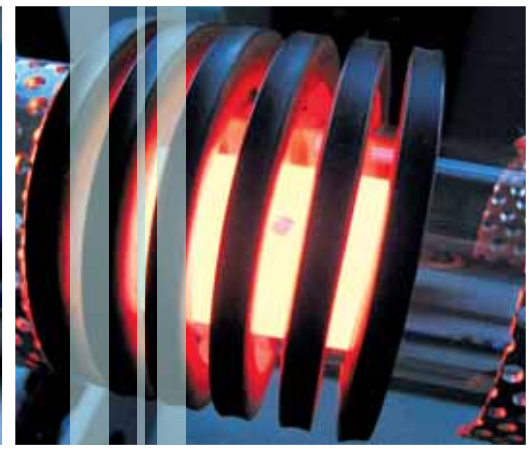
Fraunhofer Institute for Solar Energy Systems ISE, Freiburg
www.ise.fraunhofer.de

Fraunhofer Institute for Systems and Innovation Research ISI, Karlsruhe
www.isi.fraunhofer.de

Fraunhofer Information Center for Planning and Building IRB, Stuttgart
www.irb.fraunhofer.de

CONTRACT RESEARCH

Aside from the universities and institutions of the major research bodies, several smaller-scale, legally-independent institutes conduct research in Baden-Württemberg. These research institutes, with a strong economic focus, pursue their own research in order to tap relevant technology fields for industry early on. Contract research for SMEs accounts for the bulk of the work. Contract research institutions thus form an important bridge between basic research at universities and technical advances in companies. Services offered by the institutes include consultancy, basic and further training as well as research-related test services and inspection. In 2008, over 2,200 projects were conducted, for the most part with SMEs. The directors of most contract research institutes also hold chairs at a university



or head a university institute. In this way, an intensive exchange of knowledge and personnel between independent research institutions and universities is ensured. For instance, at the Research Center for Information Technology (FZI), professors from the Karlsruhe Institute of Technology actively encourage technology transfer in special working groups. At the same time, students can acquire further qualifications for a career in industry through practically-oriented dissertations or doctoral theses.

The twelve contract research institutes in Baden-Württemberg cover a wide spectrum of relevant technology fields like micro-electronics, microsystems engineering, technical textiles, biotechnology, information technology or renewable energy.

Contract Research Institutions in Baden-Württemberg

Center for Solar Energy and Hydrogen Research Baden-Württemberg, Stuttgart/Ulm www.zsw-bw.de

Hohenstein Institute for Clothing Physiology, Bönningheim www.hohenstein.de

Institute for Micro Assembly Technology of the Hahn-Schickard-Gesellschaft, Stuttgart www.hsg-imat.de

Institute for Micromachining and Information Technology of the Hahn-Schickard-Gesellschaft, Villingen-Schwenningen www.hsg-imit.de

Institute for Laser Technology in Medicine and Metrology, Ulm www.uni-ulm.de/ilm

Institute for Microelectronics Stuttgart, Stuttgart www.ims-chips.de

Institute for Textile Chemistry and Chemical Fibers of the German Institutes for Textile and Fiber Research, Denkendorf www.itcf-denkendorf.de

Institute of Textile Technology and Process Engineering of the German Institutes for Textile and Fiber Research, Denkendorf www.itv-denkendorf.de

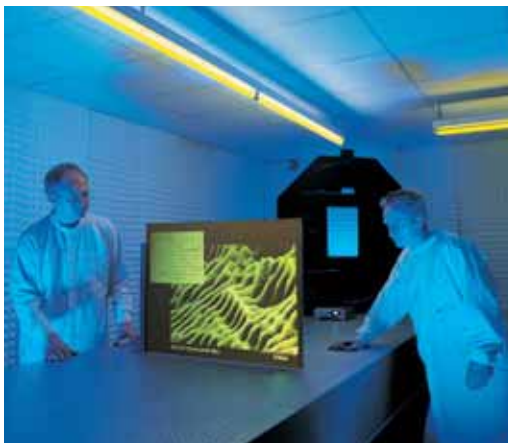
Leather Institute German Tanners' School, Reutlingen www.lgr-reutlingen.de

NMI Natural and Medical Sciences Institute at the University of Tübingen, Reutlingen www.nmi.de

Research Institute Precious Metals & Metals Chemistry, Schwäbisch Gmünd www.fem-online.de

Research Center for Information Technology, Karlsruhe www.fzi.de





HEIDELBERG ACADEMY OF SCIENCES AND HUMANITIES



The Heidelberg Academy of Sciences and Humanities, founded in 1909, is the scientific academy of the State of Baden-Württemberg and one of the eight German Academies of Sciences. In 2009 it celebrated its centenary. It is currently responsible for 20 research projects with around 220 staff. Projects include critical editions of the works and letters of great thinkers, the compilation of scientific dictionaries, music history research as well as a scientific project on climate fluctuations in the course of the Earth's history. The around 180 elected members of the Heidelberg Academy meet on a regular basis to discuss multidisciplinary topics as outstanding representatives of their fields. Divided into two departments, Humanities and Sciences, practically all academic disciplines are covered. The academy organises scientific conferences and public lecture series. With the establishment of a junior academy for young scholars and scientists (WIN-Kolleg) in 2002, the organisation of "Academy Conferences for Young Academics" and the award of research prizes, it promotes outstanding young scholars.

www.haw.baden-wuerttemberg.de

INTERNATIONAL RESEARCH INSTITUTIONS

European Molecular Biology Laboratory



The European Molecular Biology Laboratory (EMBL) was founded in 1974 and is supported by 20 European countries. Its brief includes

pursuing basic research for the entire spectrum of molecular biology, training scientists, undergraduates and extramural students, offering services to scientists from all member countries, developing new tools and methods in life sciences, and actively participating in technology transfer.

A staff of over 1,400 are employed in the main laboratory in Heidelberg as well as in branches in Grenoble (France), Hamburg (Germany), Hinxton (Great Britain) and Monterotondo (Italy).

www.embl.de



Institute for Transuranium Elements

The Institute for Transuranium Elements (ITU) in Karlsruhe is one of seven research institutions of the European Commission Joint Research Centre.

The mission of the institution, founded in 1963, is to furnish the scientific basics for protecting citizens against the dangers entailed by handling and storing highly-radioactive materials. The ITU works very closely with national and international organisations in the nuclear sector as well as the nuclear industry. It plays a key role in EU policy on atomic waste management and the safety of nuclear plants, develops and tests modern tools for probing into clandestine nuclear activities and contributes greatly to the fight against illegal trading in nuclear material. ITU researchers also focus on radionuclides, used in treating cancer.

<http://itu.jrc.ec.europa.eu>



From Idea to Product

RESEARCH AND DEVELOPMENT SPAWNS DYNAMISM

Baden-Württemberg is Europe's most innovative region. The European regional comparison shows that it invests more in research and development (2007: 4.4% of GDP), employs more people in R&D-intensive sectors of industry (22% of employed persons in Baden-Württemberg) and files more patents (127 patent applications per 100,000 inhabitants per year) than any other region in Europe.

Industry in Baden-Württemberg funds around 80 endowed chairs at the universities in the state. Many companies not only pursue research on their own behalf, but also offer it as a service.

NETWORK-BASED SYNERGIES

The Baden-Württemberg research community is far more than the sum of all individual institutions. An outstanding characteristic are the diverse forms of cooperation between universities, research institutions and companies. Networks, research groups and clusters reach far beyond the value-creation chain in their respective research field. They also promote interdisciplinary knowledge transfer.

The State of Baden-Württemberg specifically promotes the development of special future-focused fields and technologies through wide-ranging measures. These include, for example, the areas of life sciences, nanotechnology, optics/photonics, new materials, scientific computing, modelling and simulation, energy research or catalysis. A large number of research groups and competence networks have emerged, for instance in the sectors of bionics, microsystems technology, nanotechnology, aerospace and gerontology.

Existing cluster structures benefit from efficient funding through the Federal Government's high-tech strategy "Excellence Cluster Competition". The competition was launched in summer 2007. A total of three rounds, at intervals of one and a half years, are planned. Applicants can be alliances or clusters of several universities, research institutions and companies who wish to co-develop innovative products, processes and services and bring them to the market.

Two clusters with Baden-Württemberg participation succeeded in the first round of the Excellence Cluster Competition, namely the biotechnology cluster "Cell-Based and Molecular Medicine in the Metropolitan Region of Rhine-Neckar (BioRN)" and the "Forum Organic Electronics" cluster in the same region. In the second round of the competition, MicroTEC Südwest, a microsystems technology cluster coordinated in Freiburg, was successful and is now among Germany's Excellence Clusters. The Karlsruhe network "Netzwerk Cyberforum" is part of a larger software cluster including several federal states that also receives funding from the programme (www.spitzencluster.de).

TECHNOLOGY TRANSFER AND START-UPS

With a wide-ranging network aimed at transferring technologies and implementing patents, innovative research and technology results are efficiently translated into marketable products. Aside from the offices of the major research institutions, marketing is conducted for example by the Technologie-Lizenz-Büro der Baden-Württembergischen Hochschulen GmbH (TLB; Technology Licensing Office, www.tlb.de).

A key role in technology transfer, in particular in SMEs, is played by the Steinbeis Foundation in Baden-Württemberg with its transfer centres, which are mainly located at universities. Their service spectrum includes technology consultancy, continuous training and the support of specific market-relevant development ventures. The Steinbeis Group currently includes around 850 institutions around the globe (www.stw.de).

Start-ups are funded by the Initiative Gründungs- und Wachstumsfinanzierung Baden-Württemberg (GuW) (www.i-bank.de) and the Baden-Württemberg Ministry of Science, Research and the Arts Young Innovator Programme. The Bürgerschaftsbank Baden-Württemberg GmbH (www.buergerschaftsbank.de) and MBG Mittelständische Beteiligungsgesellschaft Baden-Württemberg GmbH (www.mbg.de), a self-help organisation for businesses, provide assistance in sourcing capital.

Excellent Research Climate

INTENSIVE INFRASTRUCTURE AND PROJECT FUNDING

For many years now, the Baden-Württemberg State Government has committed itself to the sustainable development of education and research. It has invested over € 1.6 billion in these sectors since 1994.

The Baden-Württemberg Ministry of Science, Research and the Arts employs various programmes to implement its research policy:

- **State Research Prize:** Instituted by the State of Baden-Württemberg, this prize acknowledges outstanding academic achievements from all disciplines and publicises them to a wider audience. With prize money of € 200,000, divided evenly between one candidate each from basic and application-oriented research, it is the largest research award bestowed by a federal state in Germany.
- **Structure and Innovation Fund for Research:** This programme supports universities and universities of applied sciences in attracting top academics.
- **Research Universities Focus Programme:** In this programme, the Ministry provides the research universities with start-up funding for tapping and developing new research fields.
- **Universities of Applied Sciences Focus Programme:** The Ministry funds applied research institutes at universities of applied sciences with a fixed basic sum and a performance-pegged bonus, and also supports projects of a particularly innovative nature.
- **Cooperative projects in research and development at universities of applied sciences:** Cooperative projects jointly conducted by universities of applied sciences and businesses, groups or other external partners are primarily funded in this category.

www.mwk.baden-wuerttemberg.de

The Baden-Württemberg Ministry of Economics promotes the State's application-oriented research institutions and funds co-research projects between research institutions and companies. Its cluster policy supports a closer networking of universities, research institutions and industry. Towards this end, in 2008 a regional cluster competition was organised in which twelve initiatives from various technology areas were found eligible for public funding. In summer

2009, another competition was launched to boost national networks specifically centred around the subjects of automotives, application-oriented satellite navigation and mobile IT, as well as fibre-based materials. Results are expected in 2010. The Ministry of Economics also published a regional cluster atlas for Baden-Württemberg in 2008.

www.wm.baden-wuerttemberg.de

The aim of the Landesstiftung Baden-Württemberg is to safeguard Baden-Württemberg's future viability. To this end, the foundation provides up to € 50 million annually, most of which is used for its own non-profit projects. Focuses include education, research, and social responsibility. In the research area, priority is placed on life sciences and high technology. Research programmes on, for instance, bionics, protein biochemistry, optical technologies, miniaturisation, environment and energy are therefore conducted. In the education sector, the Landesstiftung focuses on qualifications. It aims to increase the personal and educational opportunities of children, adolescents and adults with programmes ranging from improving language skills to creating international expertise and specific promotion of talents. Integration, prevention and mobility enhancement programmes reflect the foundation's social commitment.

www.landesstiftung-bw.de

The universities and research institutions in Baden-Württemberg also draw considerable benefit from German government funding in open technology funding programmes. These primarily promote the development of research groups comprising research institutions and businesses, as well as specialist programmes which advance developments in basic technologies.

www.foerderinfo.bund.de

Encouraged by the Excellence Initiative, the universities become high-profile, first-rate research centres of international stature and, through the Federal Government's Excellence Cluster Competition, universities, research institutions and companies receive funding for joint research activities within the framework of specific clusters.

www.bmbf.de, www.spitzencluster.de



With its diverse funding spectrum, the German Research Foundation (DFG) supports many Collaborative Research Centres, graduate schools and individual activities in Baden-Württemberg. In 2009 alone, 37 Collaborative Research Centres in the State received funding to the amount of € 69.5 million.

www.dfg.de

One main funding source is the European Union. In the 6th Research Framework Programme, Baden-Württemberg was by far the most successful state in Germany. Universities, research institutions and companies succeeded in acquiring a total of € 673 million from this programme for research purposes. One of the three Knowledge and Innovation Communities (KIC) funded by the European Institute for Innovation and Technology (EIT) is the energy research project “InnoEnergy”, submitted under the auspices of the Karlsruhe Institute of Technology (KIT).

www.cordis.europa.eu

EXPERT PARTNERS

Baden-Württemberg International (bw-i) is the centre of competence of the State of Baden-Württemberg for internationalisation, promotion and development in the areas of industry and services as well as science and research. Baden-Württemberg International markets the

State’s business, education and research opportunities both within Germany and abroad. It supports companies, universities and research institutions in setting up international cooperation, assists foreign companies investing in Baden-Württemberg and conducts projects in selected target countries. Baden-Württemberg International is also the first point of contact in these areas for all kinds of requests from home and abroad.

www.bw-i.de

MFG Baden-Württemberg operates as the State’s innovation agency for IT and media on the networking of the creative industry and technology sectors. One business unit is the MFG Foundation, which is active in research management.

www.mfginnovation.de

As a statewide service and marketing company, BIOPRO Baden-Württemberg specifically supports research institutions and companies in the biotechnology and life sciences sectors.

www.bio-pro.de

The Steinbeis European Centre supports SMEs and research and development institutions in the acquisition of EU funding and in seeking cooperation partners and research projects.

www.steinbeis-europa.de, www.wissenschaftswirtschaft-bw.de





More information on the web.

www.baden-wuerttemberg.de

The State Government's official website provides current reports from the spheres of politics, industry, research, education, tourism and society.

www.cordis.europa.eu/baden-wuerttemberg

CORDIS, the Community Research and Development Information Service, provides information on Baden-Württemberg as a centre of science and technology.

www.bw-invest.de

This website provides potential investors with all relevant information on Baden-Württemberg and allows searching for business and research opportunities per specific sector.

www.study-guide-bw.de

People from abroad interested in studying here can find detailed information on living and studying in Baden-Württemberg, including English-language study options.

How can we help you?

Do you have questions about Baden-Württemberg as a university and research hub? Are you looking for cooperation partners for exchange activities or joint research projects? Would you like to pursue your academic career in Baden-Württemberg or visit us

to see for yourself? The department for Science, Research and the Arts of Baden-Württemberg International will be happy to assist you. E-mail us at

 info@bw-wfk.de

Baden-Württemberg International



Agency for International Economic and Scientific Cooperation

Haus der Wirtschaft
Willi-Bleicher-Str. 19
70174 Stuttgart
Germany

Phone: +49(0)711.22787-0
Fax: +49(0)711.22787-66

E-Mail: info@bw-i.de
Internet: www.bw-i.de

© Baden-Württemberg International, Stuttgart, new edition, February 2010

Graphical concept and design:
www.jungkommunikation.de

Photographs:

Cover image: Bernd Müller, www.berndmueller-fotografie.de

(with the kind permission of Landesstiftung Baden-Württemberg)

Research Universities: Freiburg, Heidelberg, Hohenheim, Konstanz, Stuttgart, KIT;

Universities of Applied Sciences: Aalen, Esslingen, Offenburg, Stuttgart (HdM);

Others: Bernd Müller; EMBL; FEM Schwäbisch Gmünd; Fraunhofer EMI, IAF, IAO, IBP, IGB, IPA; Kiepenheuer Institute for Solar Physics; Max Planck Society; zafh.net

Translation: Verbalis



Baden-Württemberg

The German Southwest.